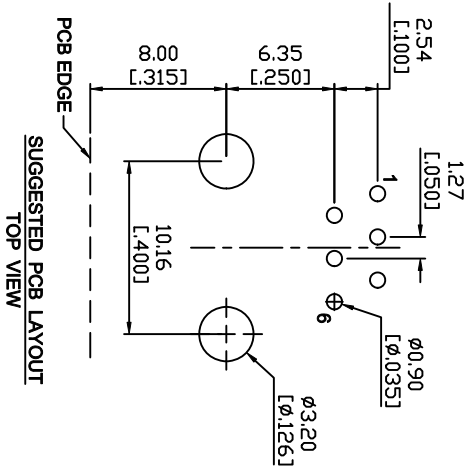
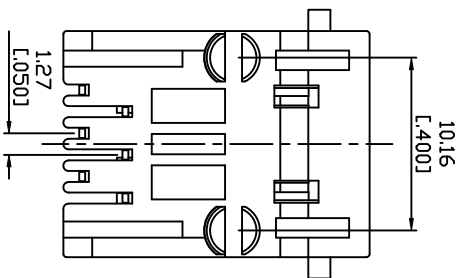
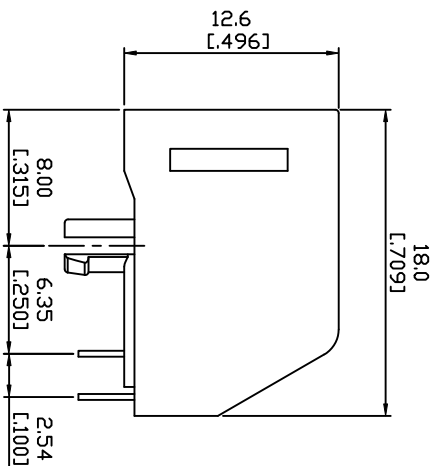
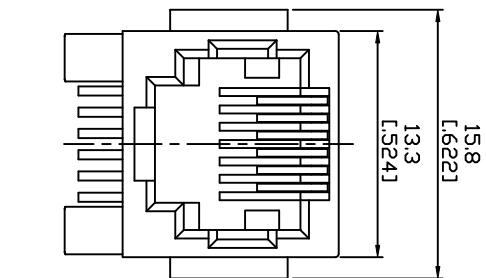
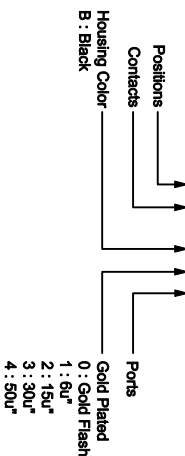


Electrical Characteristics :
 Insulation Resistance : 500M Ω Min.
 Contact Resistance : 50m Ω Max.
 Withstand Voltage : 1000 VAC 1 minute.
 Current Rating : 1.5A

Material:
 Housing: Thermoplastic UL 94V-0
 Contact : Selective Gold Plating
 Terminal: 0.35mm Thickness Phosphor Bronze
 Plated With Gold And Tin In Solder Area.
 CUL File No : E215573

PART NO : 6666-B*1



ZONE	REV.	DESCRIPTION	DATE	APPD.	FILE NO. : 66 (SERIES)
(A)	A.1	Withstand Voltage 500修改為 1000VAC	2008-08-01	Nick	
(B)					TOLERANCE(公差) :
(C)					0.000 mm \pm 0.075 mm
(D)					0.00 mm \pm 0.15 mm
(E)					0.0 mm \pm 0.25 mm

 博威電子股份有限公司 POWERWAY ELECTRONICS CO.,LTD.			
TITLE 圖名	6P6C SIDE ENTRY PCB JACK	UNIT 單位	mm
PART NO. 料號	6666-B*1	SCALE 比例	1 : 1
REV. 版本	A.1	DATE 日期	2007-01-17
CHECKED BY 審核	Michael	DRAWN BY 製圖	Valiant