

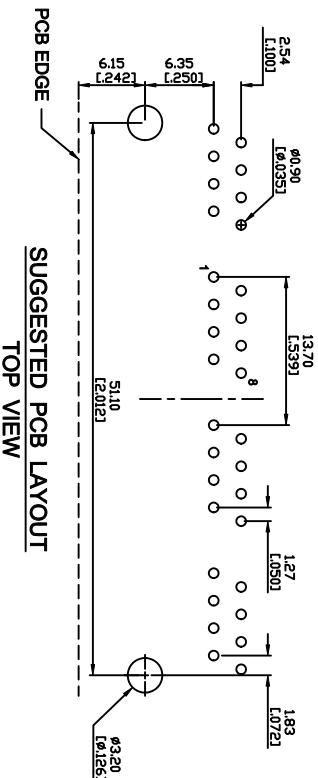
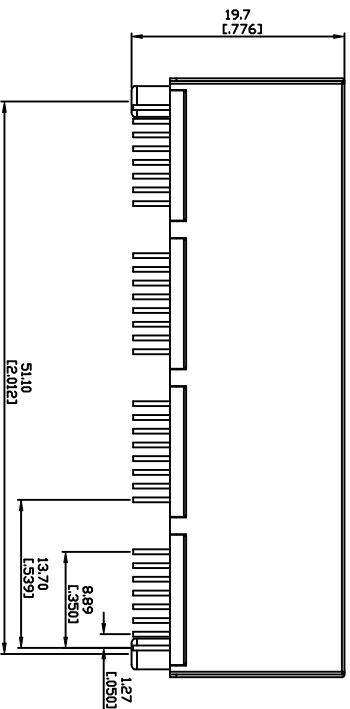
Electrical Characteristics :
 Insulation Resistance : 500MΩ Min.
 Contact Resistance : 50mΩ Max.
 Withstand Voltage : 1000 VAC 1 minute.
 Current Rating : 1.5A

Material:

Housing: Thermoplastic UL 94V-0
 Contact : Selective Gold Plating
 Terminal: 0.35mm Thickness Phosphor Bronze
 Plated With Gold And Tin In Solder Area.
 CUL File No : E215573

PART NO : 5 3 8 8 C - B * 4

Positions →
 Contacts →
 Ports →
 Gold Plated
 0 : Gold Flash
 1 : 6u"
 2 : 15u"
 3 : 30u"
 4 : 50u"
 Housing Color →
 B : Black



ZONE	REV.	DESCRIPTION	DATE	APPD.	FILE NO : 5388C (SERIES)
①	A.1	Withstand Voltage 500修改為 1000VAC	2008-08-01	NICK	
②					
③					
④					
⑤					

TOLERANCE(公差) :
 0.000 mm ± 0.075 mm
 0.00 mm ± 0.15 mm
 0.0 mm ± 0.25 mm

TITLE	NON-SHIELDED RJ45 TOP ENTRY PCB JACK		UNIT	mm
圖名			單位	Inch
PART NO.	5388C-B*4		SCALE	1:1
料號			比例	
REV.	A.1	DATE	2007-12-07	
版本		日期		
CHECKED BY	Michael	DRAWN BY	David	
審核		製圖		



博 威 電 子 股 份 有 限 公 司
POWERWAY ELECTRONICS CO.,LTD.